

● Specifications (02/22/2005)

GRIZZLY
GS 60 SERIES

Anti-Vibration Rail

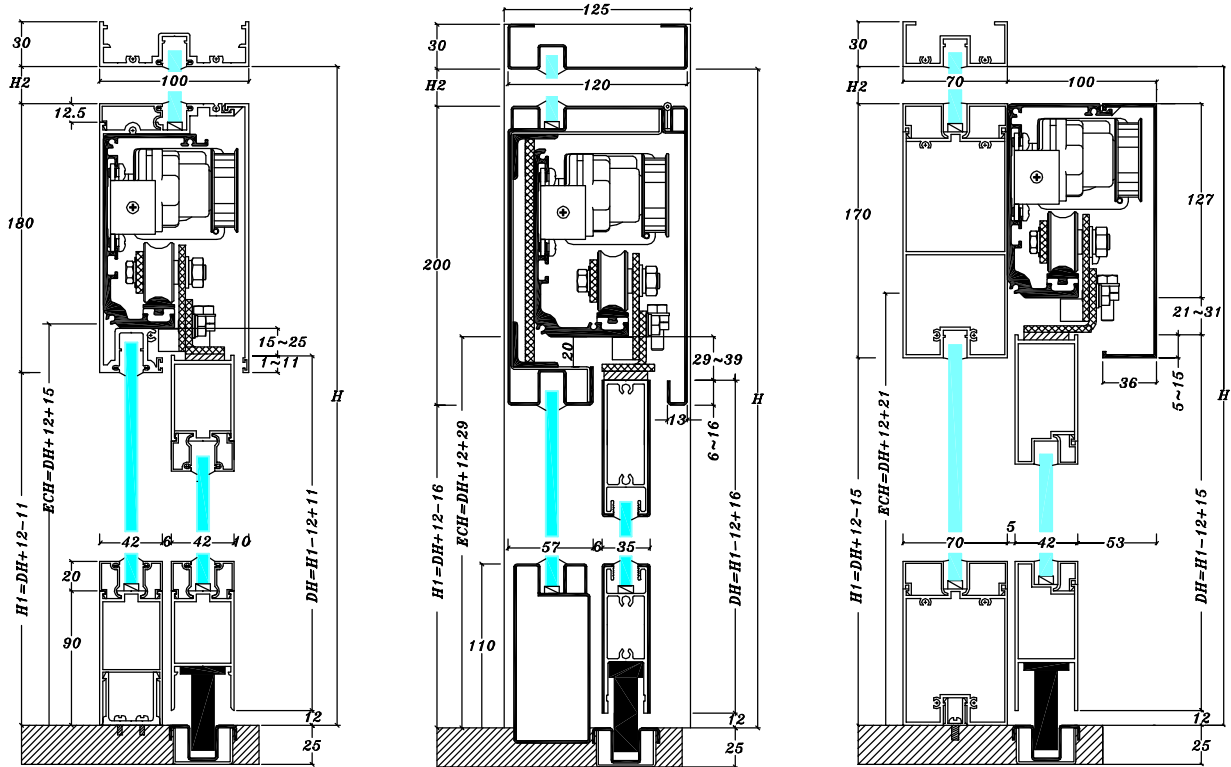


SAFE GLIDE

GS 6060-L - S S [AC-24V]		1.Type:GS=Sliding 2.Series: 45、60、80Series 3.Speed: 45、60、80、100 cm/sec 4.Weight: Lightweight, Middleweight, Heavyweight 5.Structure: S=Surface, C=Concealed 6.Door: S=Single, B=Bi-parting 7.Power Supply: AC24V, AC110V, AC220V								
Model		GS 6060-L	GS 6060-M	GS 6060-H	GS 6080-L	GS 6080-M	GS 6080-H	GS 60100-L	GS 60100-M	GS 60100-H
Engine case structure		Aluminum case + (Anti-vibration rail)								
Opening speed		60cm/sec/leaf			80cm/sec/leaf			100cm/sec/leaf		
Closing speed		12~60cm/sec/leaf(adjustable)			12~80cm/sec/leaf(adjustable)			12~100cm/sec/leaf(adjustable)		
Slow speed		3~6 cm/sec/leaf(adjustable)								
Driving belt		Timing-belt : S8M-14mm Width								
Driving block		World patented Permanent Magnet brushless servo motor and direct drive twin gear box								
Motor power	Rating power	45Watt	60Watt	80Watt	60Watt	80Watt	100Watt	80Watt	100Watt	120Watt
	Starting power	180Watt	240Watt	320Watt	240Watt	320Watt	400Watt	320Watt	400Watt	480Watt
Weight	Single	90kg (*120kg)	120kg (*150kg)	150kg (*200kg)	90kg (*120kg)	120kg (*150kg)	150kg (*200kg)	90kg (*120kg)	120kg (*150kg)	150kg (*200kg)
	Bi-parting	60kg X2 (*90 X2)	90kg X2 (*120 X2)	120kg X2 (*150 X2)	60kg X2 (*90 X2)	90kg X2 (*120 X2)	120kg X2 (*150 X2)	60kg X2 (*90 X2)	90kg X2 (*120 X2)	120kg X2 (*150 X2)
Door width		60 cm /min/leaf			75 cm /min/leaf			85 cm /min/leaf		
Hanger roller number		Ø40 Engineering plastic × 2 Wheels (Balance mechanism,Self-cleaning mechanism)								
Hold opening time		0.5~20 sec (adjustable)								
Manual opening force		Less than 3.5kg-f (Auto Lock : press by low push force)								
Temperature range		-30° ~ +60° C								
Door gravity balance rod		○								
SAFE GLIDE	Closing Speed Limited	30cm/sec/leaf Maximum(Switchable)								
	Full Range Reverse	Operate of normal,slow down and slow speed area, Not operate within 1 cm on door close								
	High Sensitive Reverse	Catchment force:6~10kg measure by Push-Pull Scale at 12cm/sec closing speed(adjustable)								
Multi-function		Breakout(Swing open), Side screen safety, Battery low and Fire system connectable (Optional)								
Additional function		Door Lock, UPS and Ext. Functions Box:Auto, Part, Open, Exit, Close and Operation mode LED (Optional)								

*Should the door overloads, the speed will 1/5 slower than standard.

● Profile of engineering structure

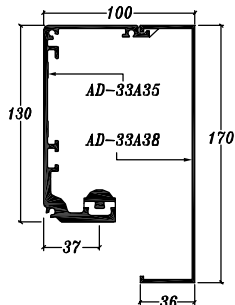


Concealed aluminum

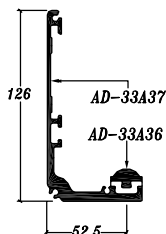
Concealed stainless

Surface-mounted

● Concealed aluminum & Surface-mounted Engine Case



● Concealed Stainless Engine Case



● Components in Auto-door Installation

(Unit : mm)

Unit	No.	Length				
Concealed aluminum & Surface-mounted Engine Case	AD-33A35	2100	2300	2500	2800	3200
Surface-mounted Engine Cover	AD-33A38	2100	2300	2500	2800	3200
Concealed Stainless Engine Case	AD-33A37	2105	2305	2505	2805	3205
Anti-vibration Rail	AD-33A36	2105	2305	2505	2805	3205